

UNIVERSITÀ SAPIENZA – ROMA

# COURSE OF URBAN MORPHOLOGY

A.A. 2018/19

Professor Giuseppe Strappa

Architects Anna Rita Donatella Amato

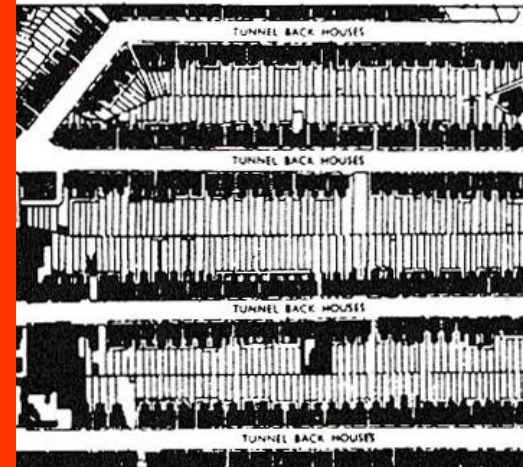
Vincenzo Bongiorno

Marta Crognale

Cristian Sammarco

LECT. 5

## BASE BUILDING AND ANCIENT SUBSTRATA







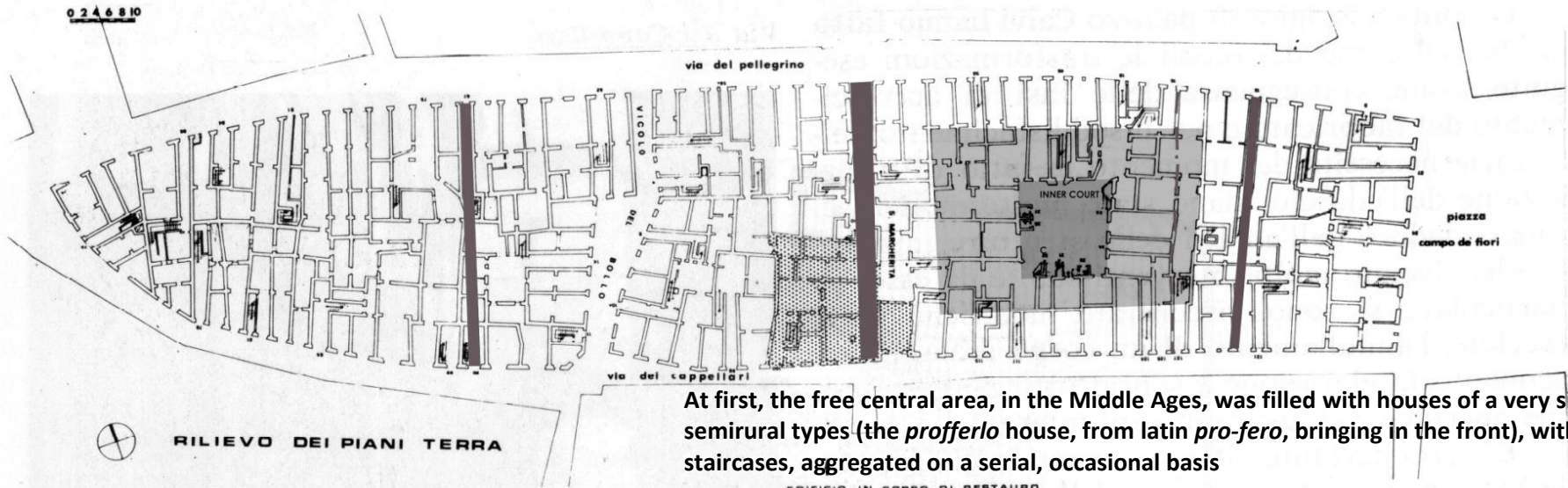
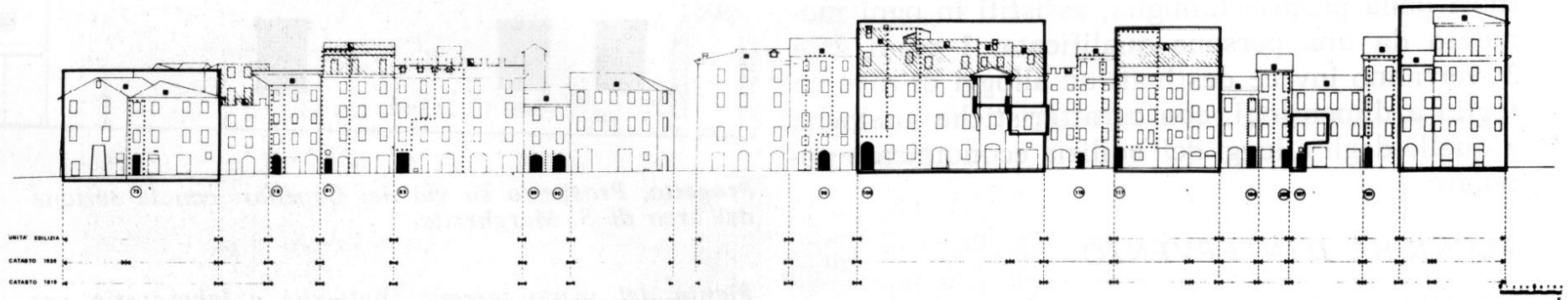
Porticus Octaviae



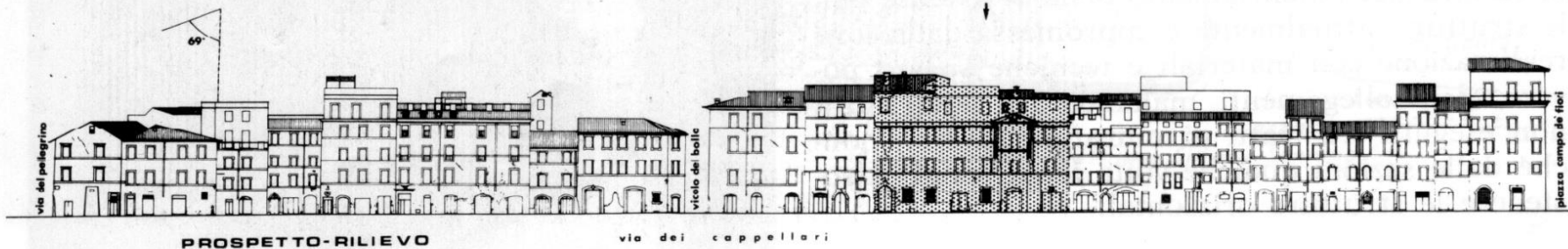




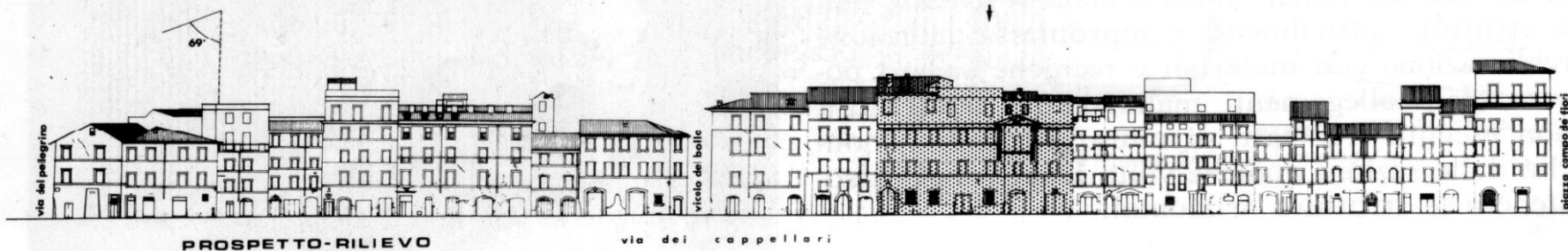
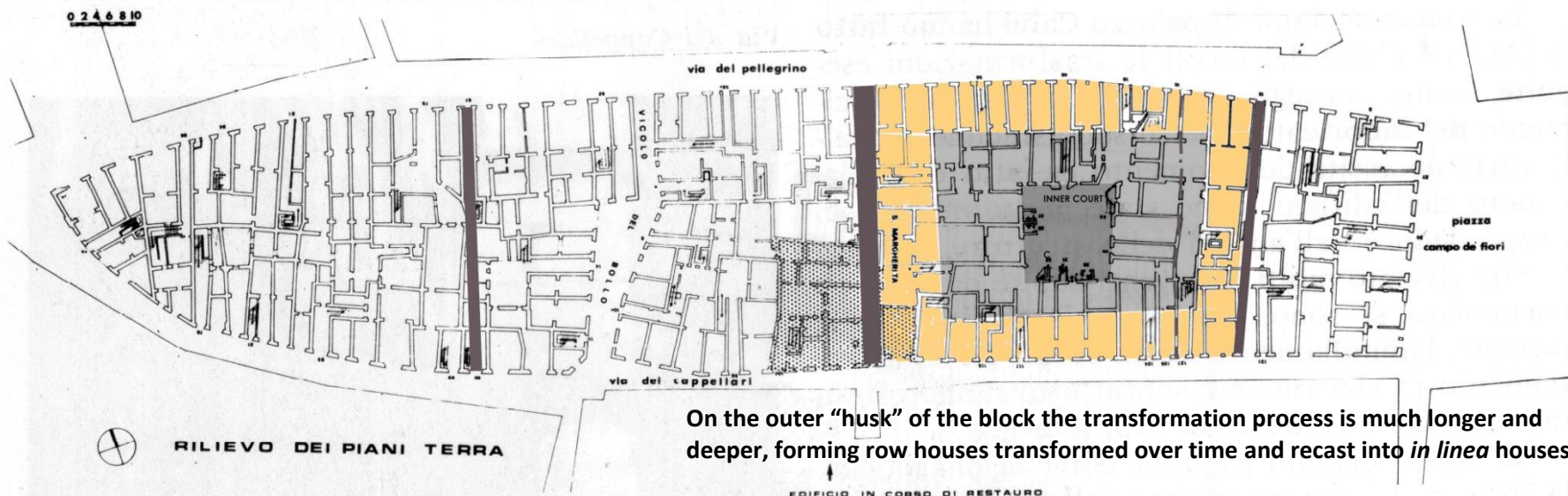
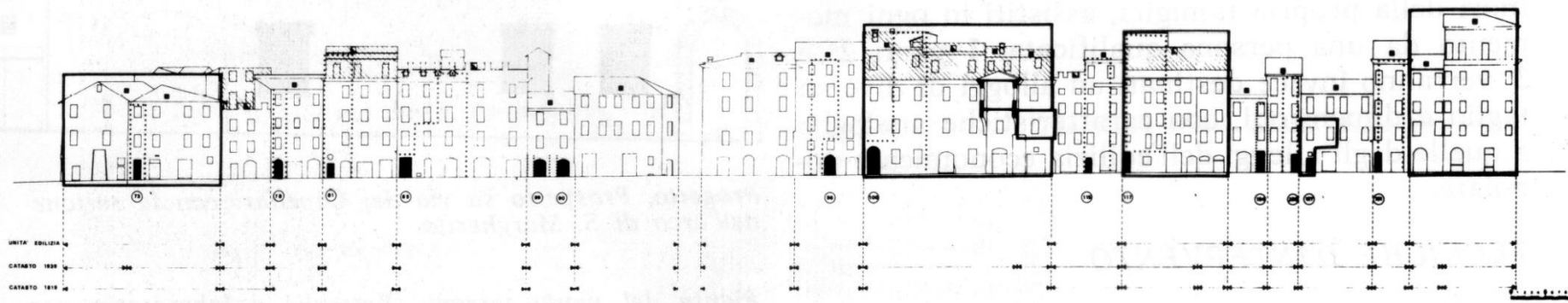




At first, the free central area, in the Middle Ages, was filled with houses of a very simple, semirural types (the *profferlo* house, from latin *pro-fero*, bringing in the front), with external staircases, aggregated on a serial, occasional basis







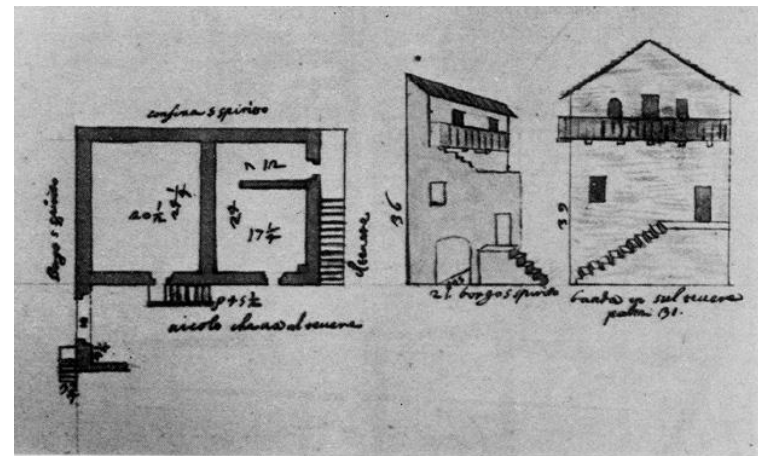




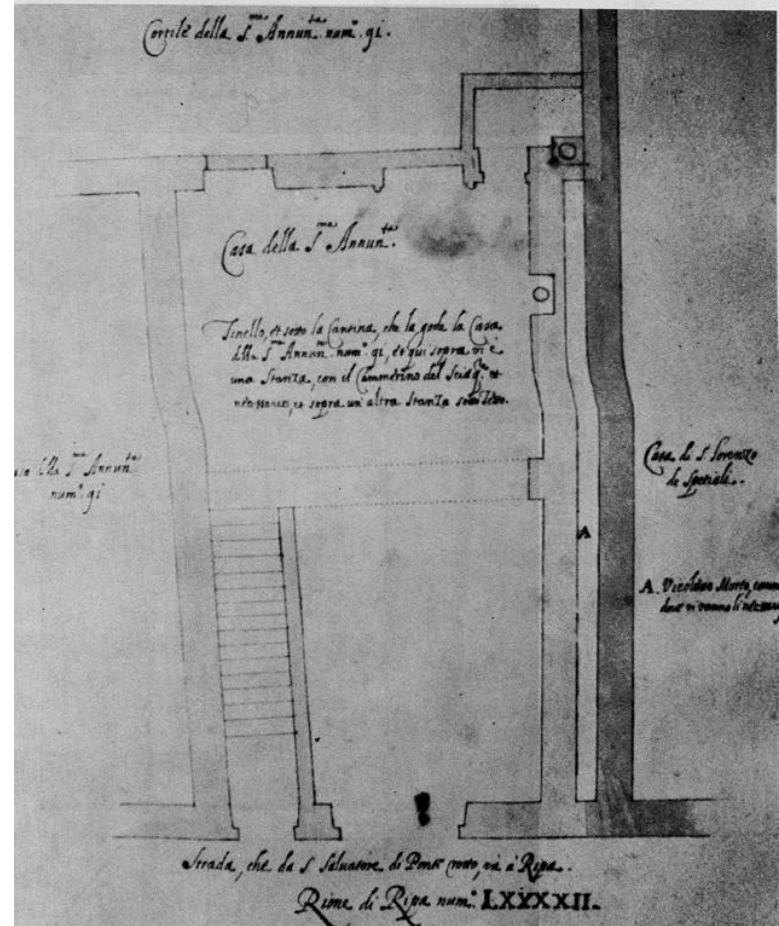
#### 4 phases in the same block

- ancient roman substratum
- medieval *profferlo* houses aggregate
- medieval/renaissance row houses
- multi-family nineteenth-century houses





a







VIA DEL PELLEGRINO

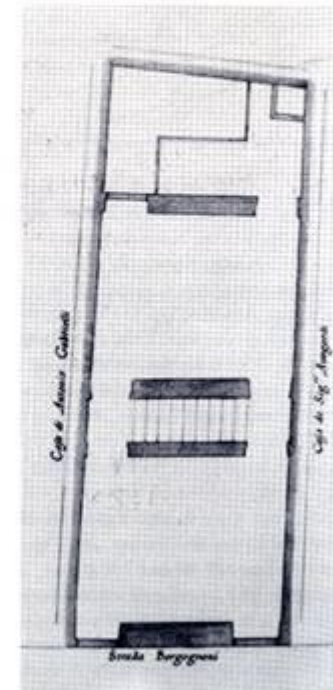
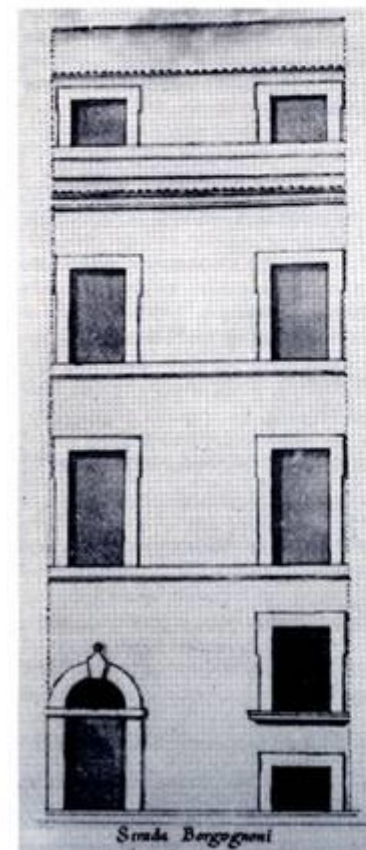
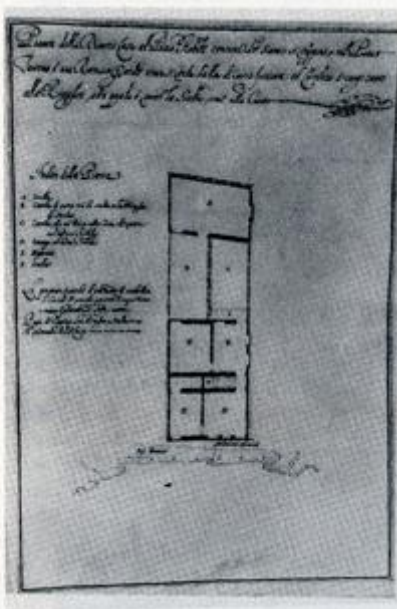
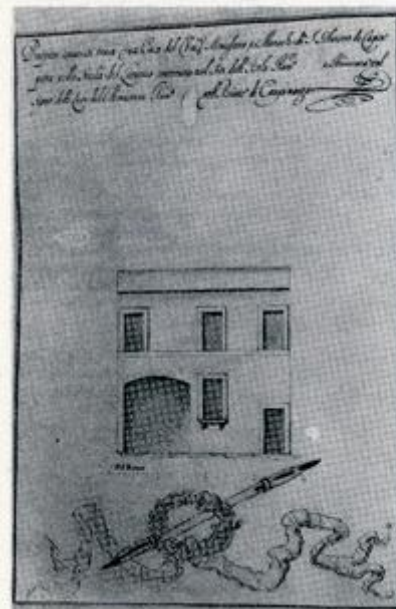
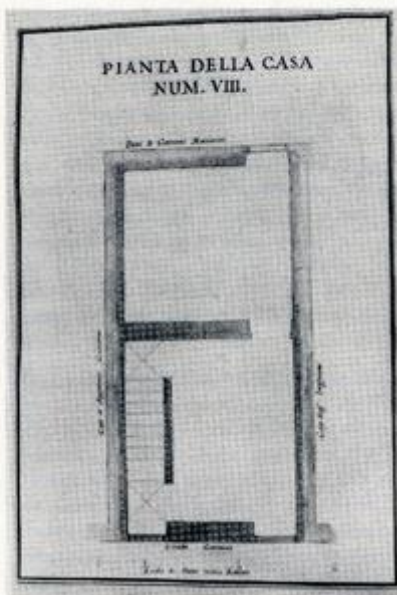
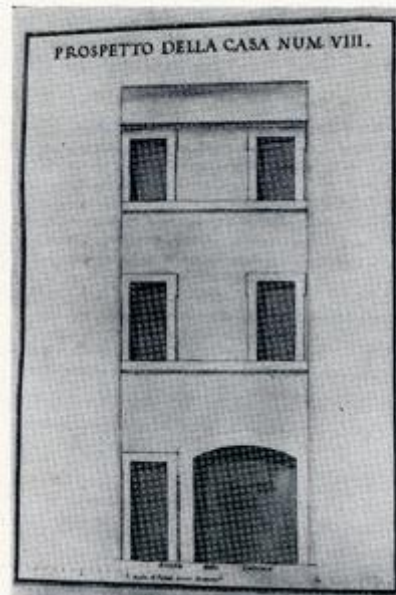
In the perimeter of the block, instead, we find more recent, urban row houses.

In the semi-abandoned via dei Cappellari, the houses remained quite close to the original row house form. In the busy via del Pellegrino, a road much more commercial and used by pilgrims going to the Vatican, houses extensively transformed in the Nineteenth century are encountered. Even in the transformations, it is still possible to clearly recognize the original type with double window and double doors.



VIA DEI CAPPELLARI





CASA 2

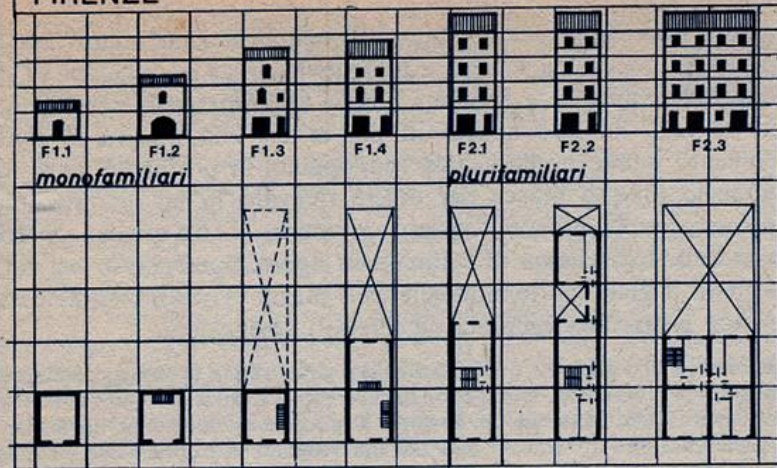
CASA 2

Casa ad atrio  
in via Borgognona

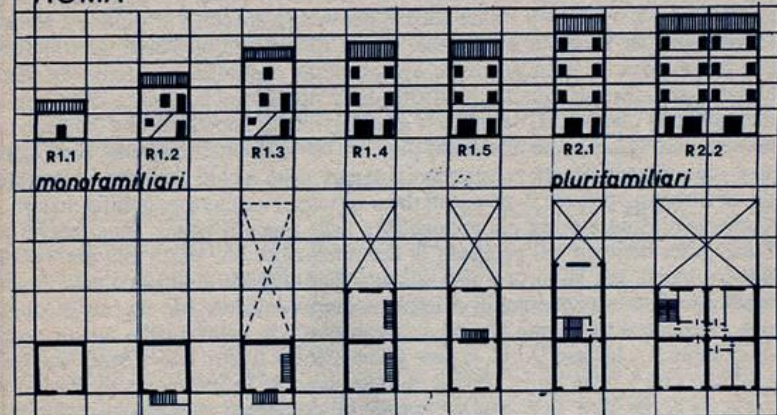
Case in via delle Carrozze  
Di proprietà del Convento di  
S. Silvestro in Capite (XVI secolo)



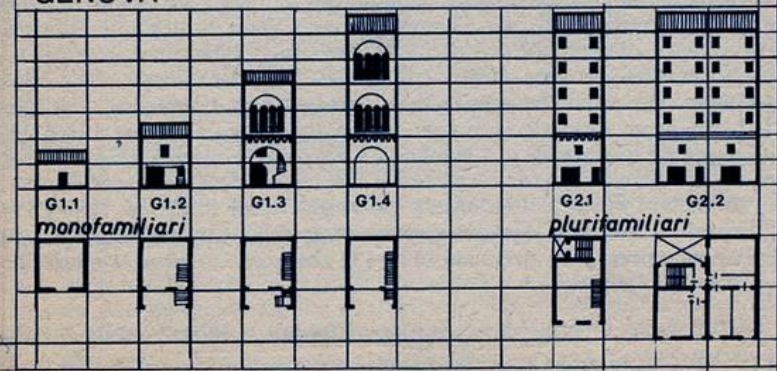
## FIRENZE



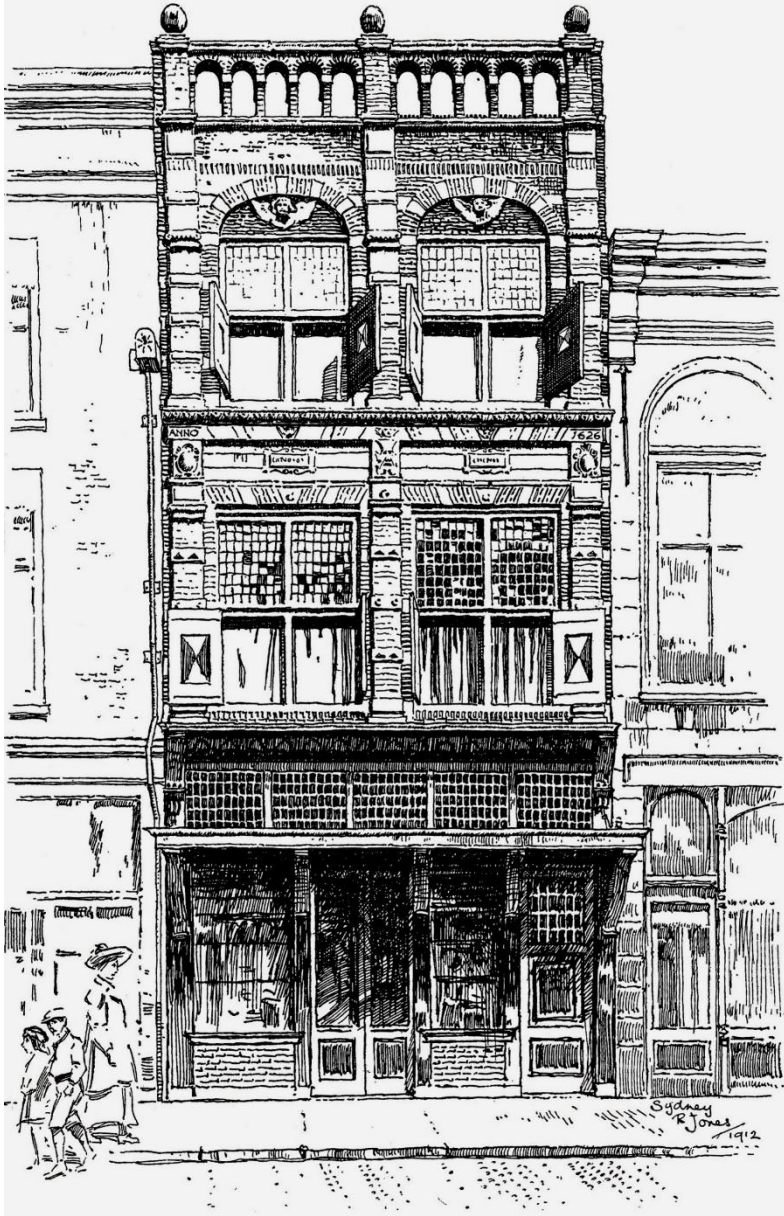
## ROMA



## GENOVA







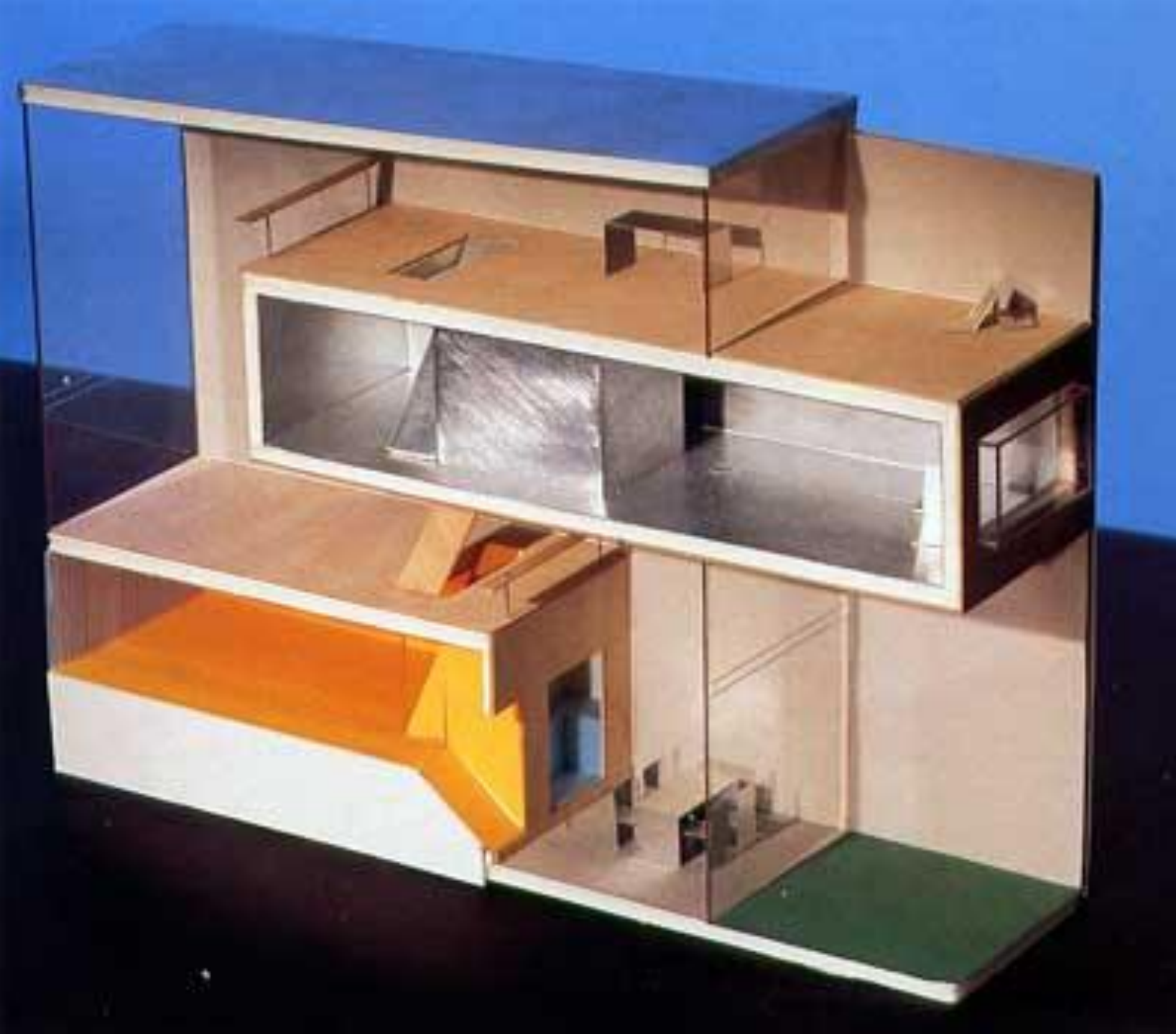
DORDRECHT, SOUTH HOLLAND (DATED 1626)









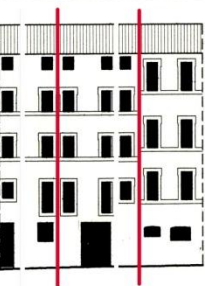
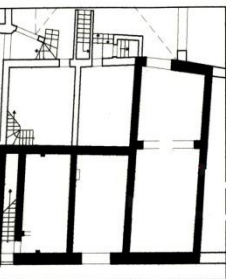




Unity as aggregation of cells



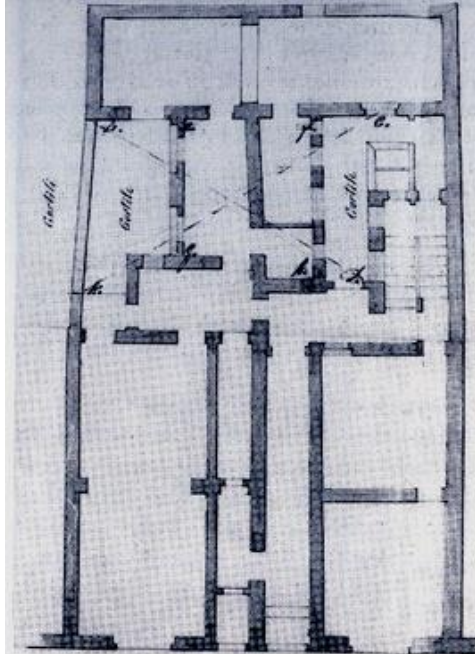




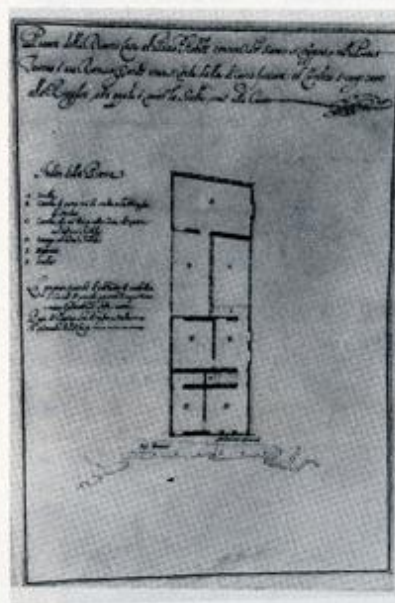
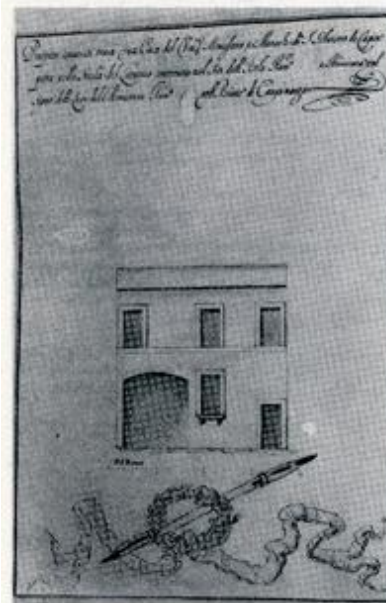
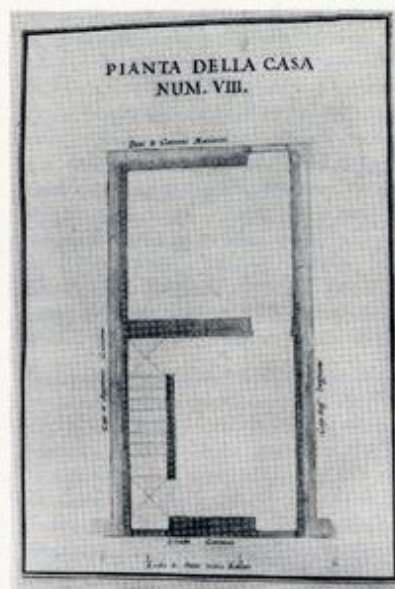
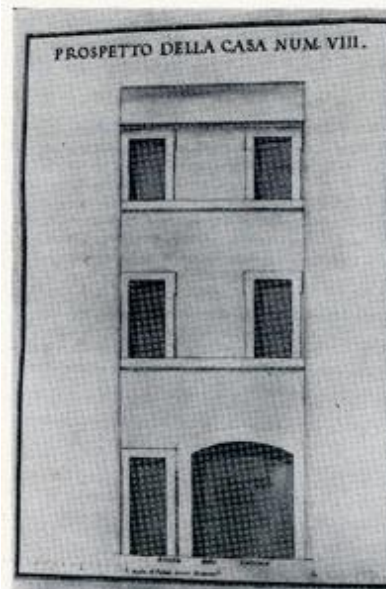
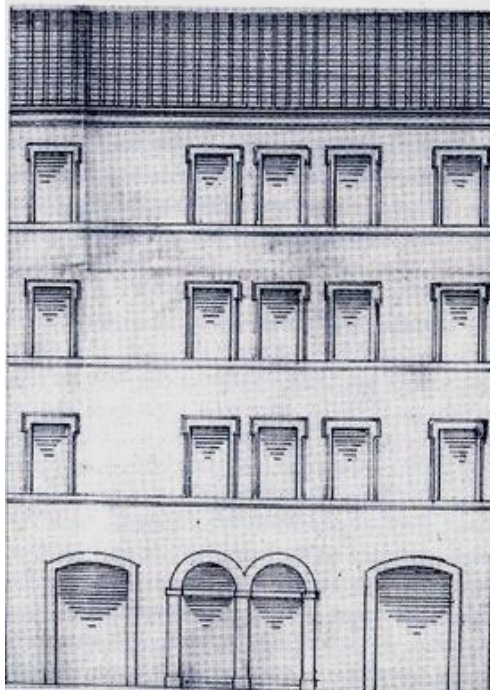
ROW HOUSES IN  
VIA DEI  
CAPPELLARI



MULTIFAMILY ROW HOUSES IN VIA  
DEL PELLEGRINO



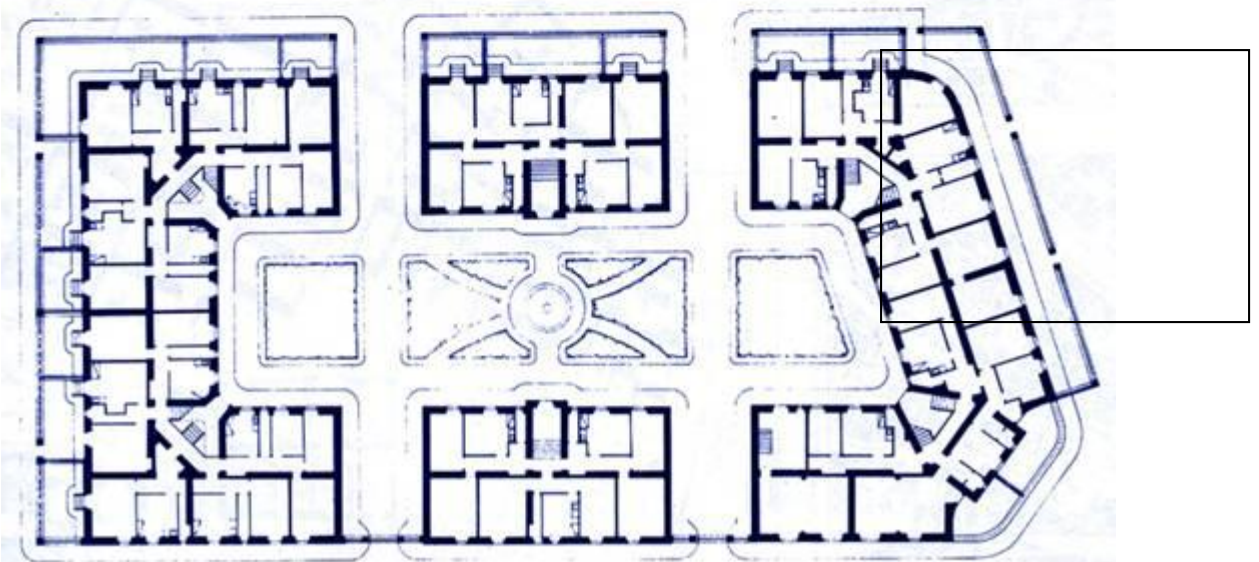
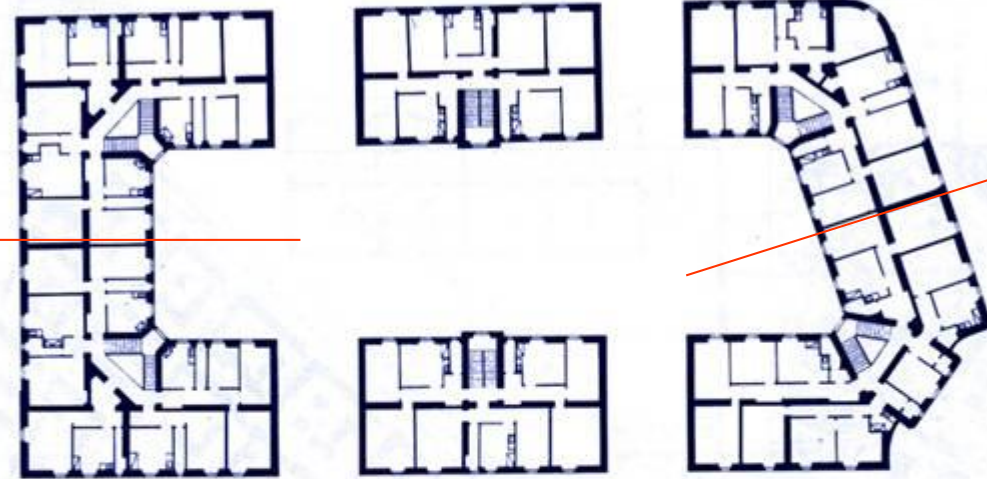
ROW HOUSES MELTED AND  
TRANSFORMED IN LINEA HOUSE



“BOTTEGA” AND “ATRIUM” ROW HOUSES

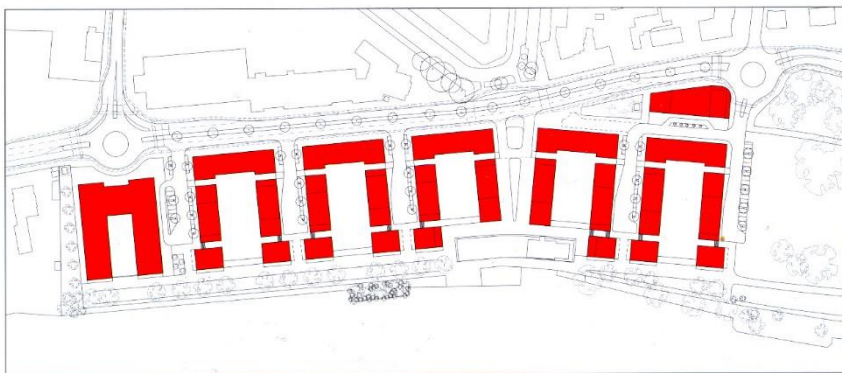


- ICP San Saba 1907-23





9

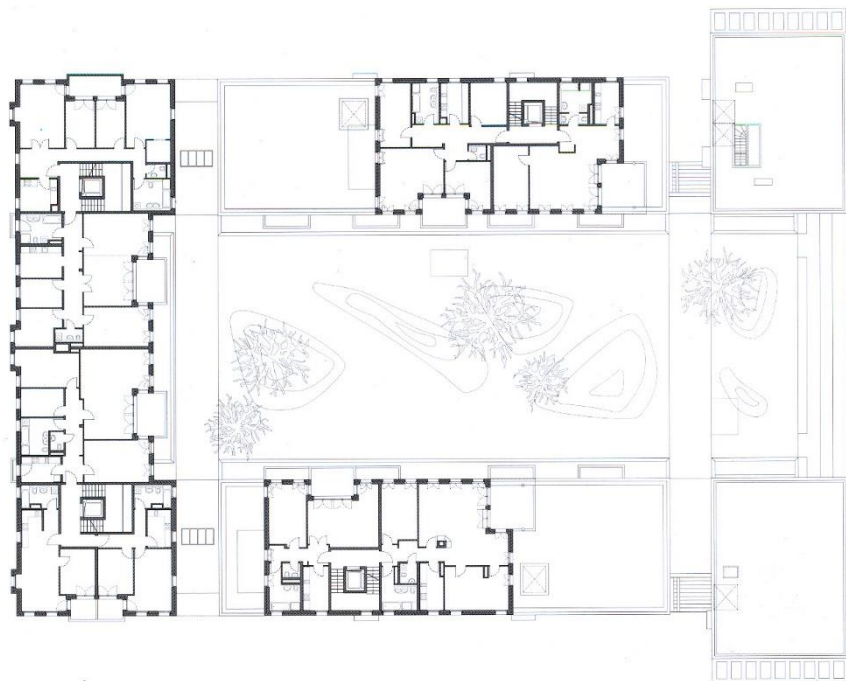


Theo Brenner 2010 case in linea sul lago di Costanza

10



11





# SUBSTRATA – ROMAN SPECIAL ORGANISMS TRANSFORMATION







On the existing substrata, in the Twelfth century, porched merchant row houses are built for fabric traders in Via delle Botteghe Oscure and in Via dei Delfini, recasting over time





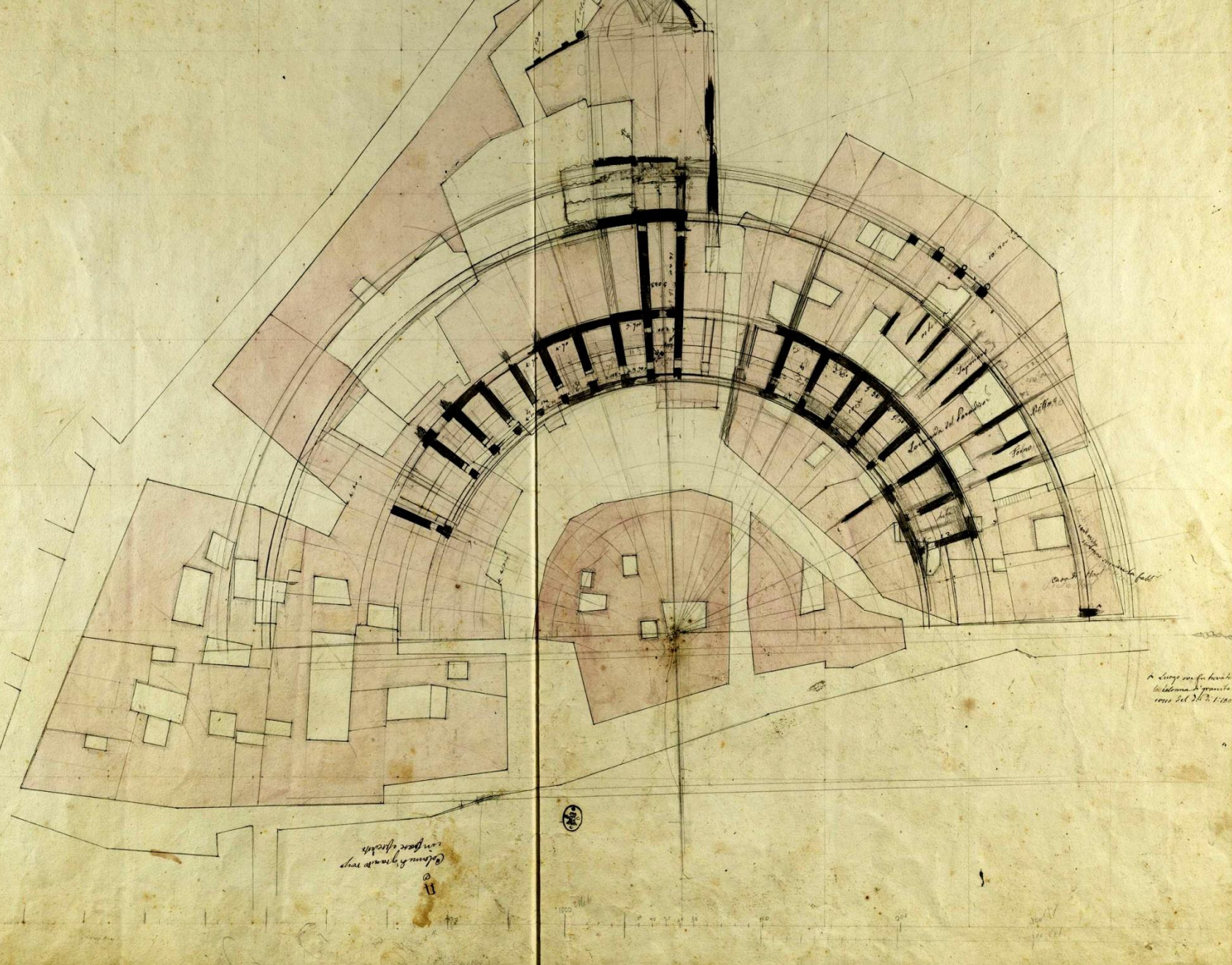


ROW HOUSES AND POSITION VARIANT AT THE START OF VIA DEI DELFINI



ROW HOUSES AND MELTING OF TWO UNITIES IN VIA DEI DELFINI



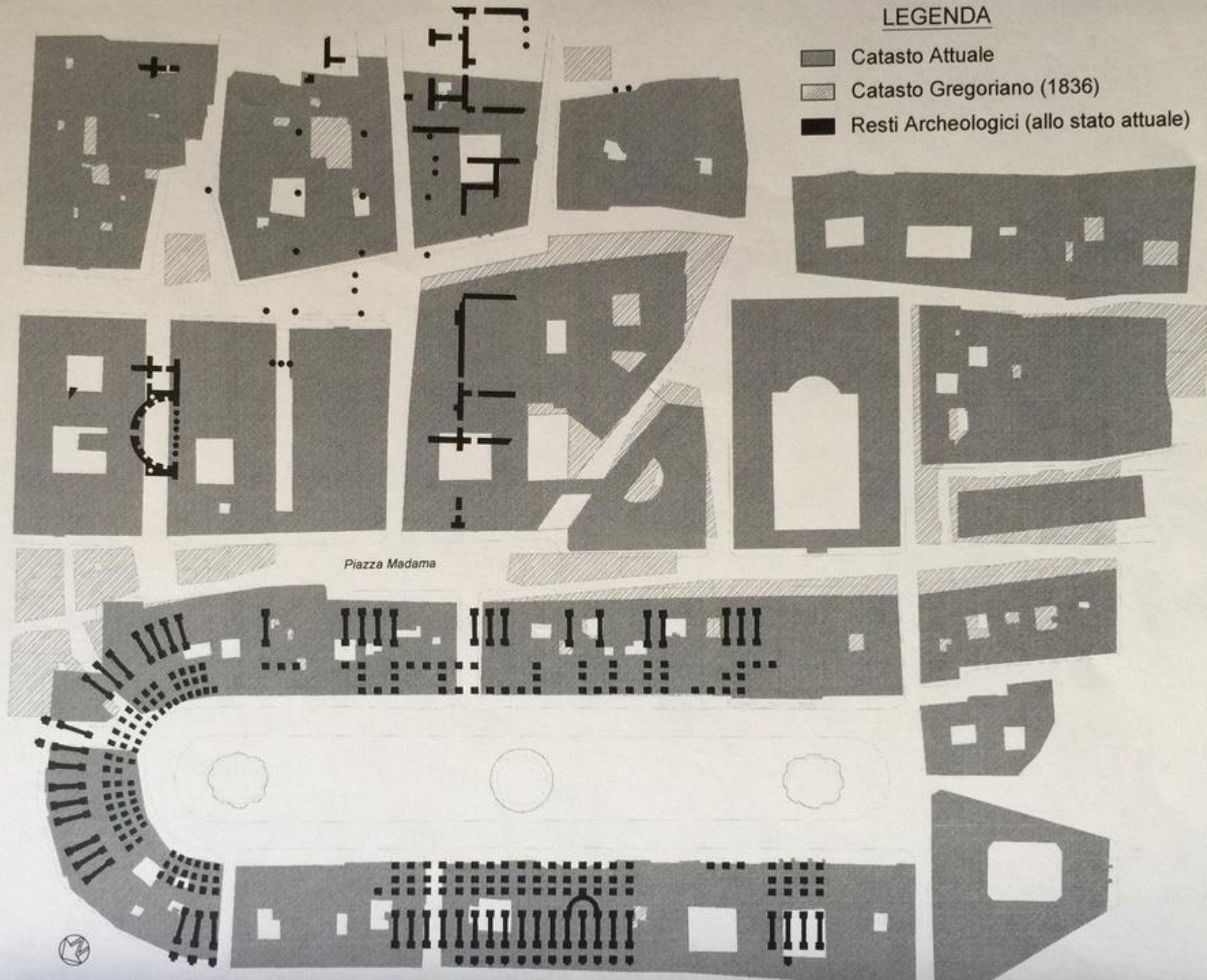


Plan of the Pompeii theatre excavations superimposed on the cadastral map (beginning of Nineteen Century).



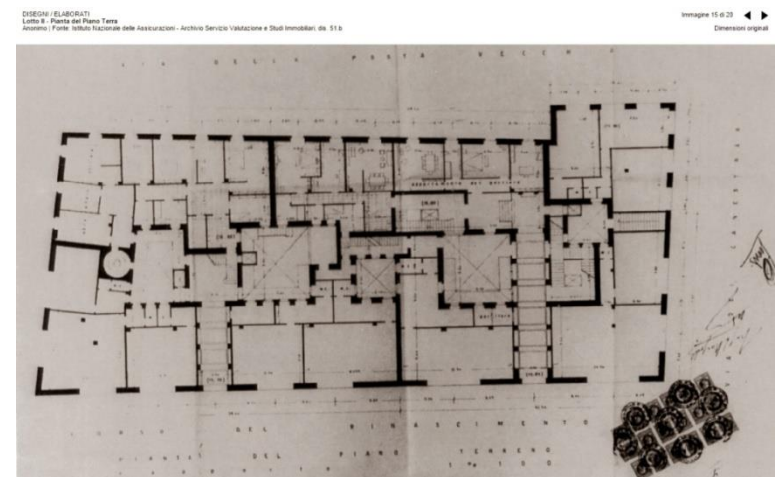
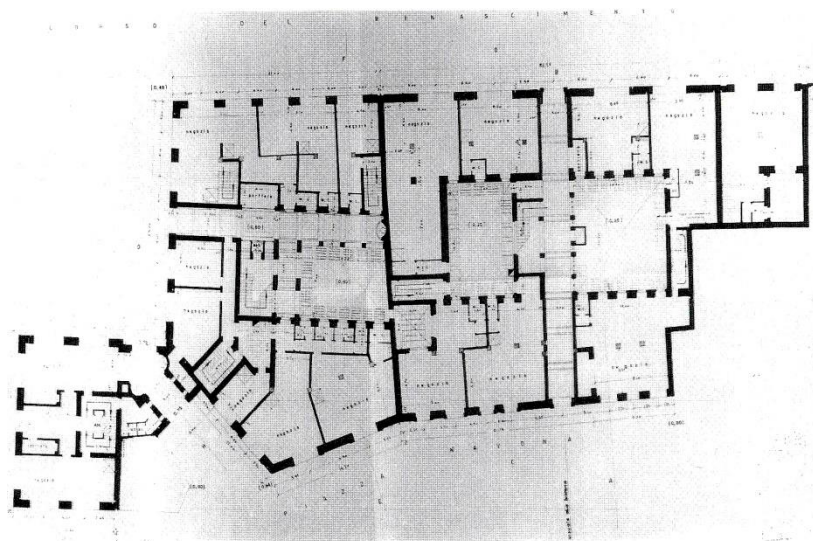
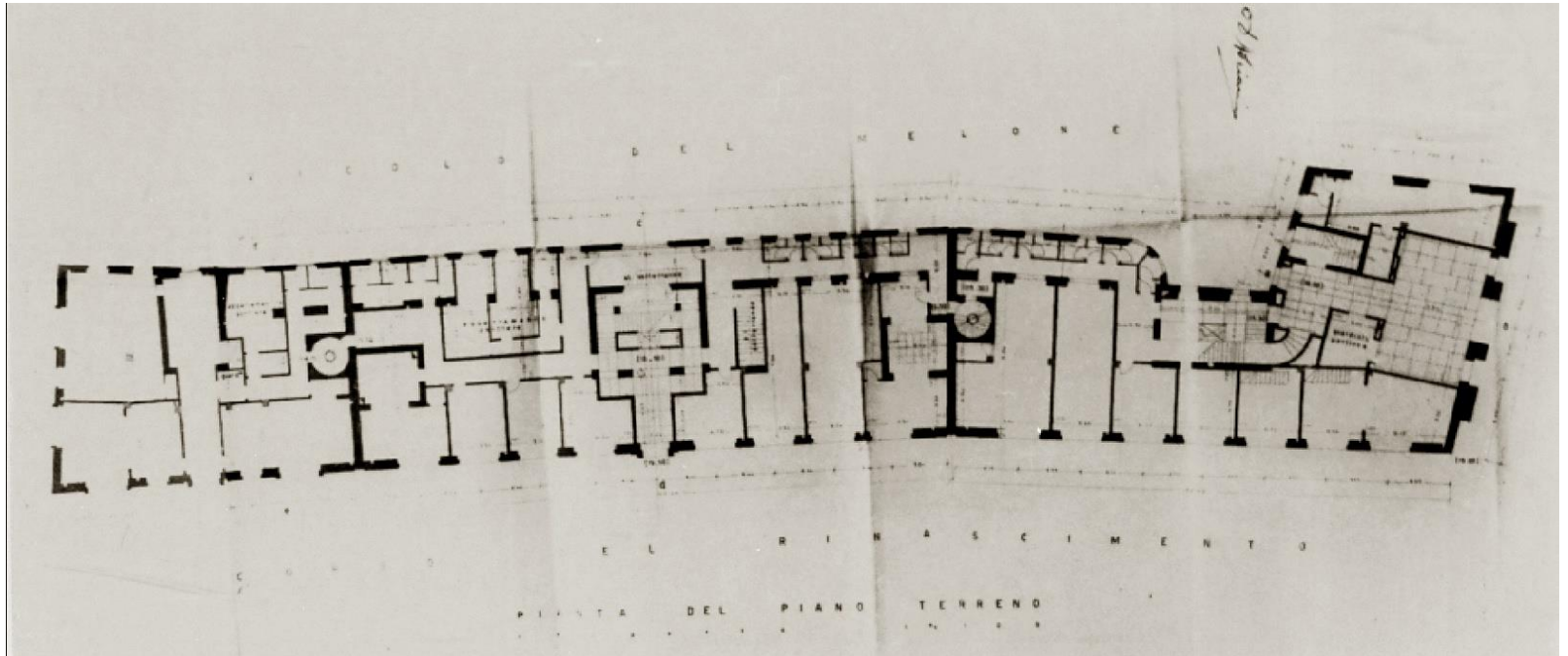
# LEGENDA

- Catasto Attuale
- Catasto Gregoriano (1836)
- Resti Archeologici (allo stato attuale)





The plan of Corso Rinascimento by Arnaldo Foschini, although destructive, proposes a logical continuity in the reconstruction. It is a realistic kind of “redesign” of the old fabric

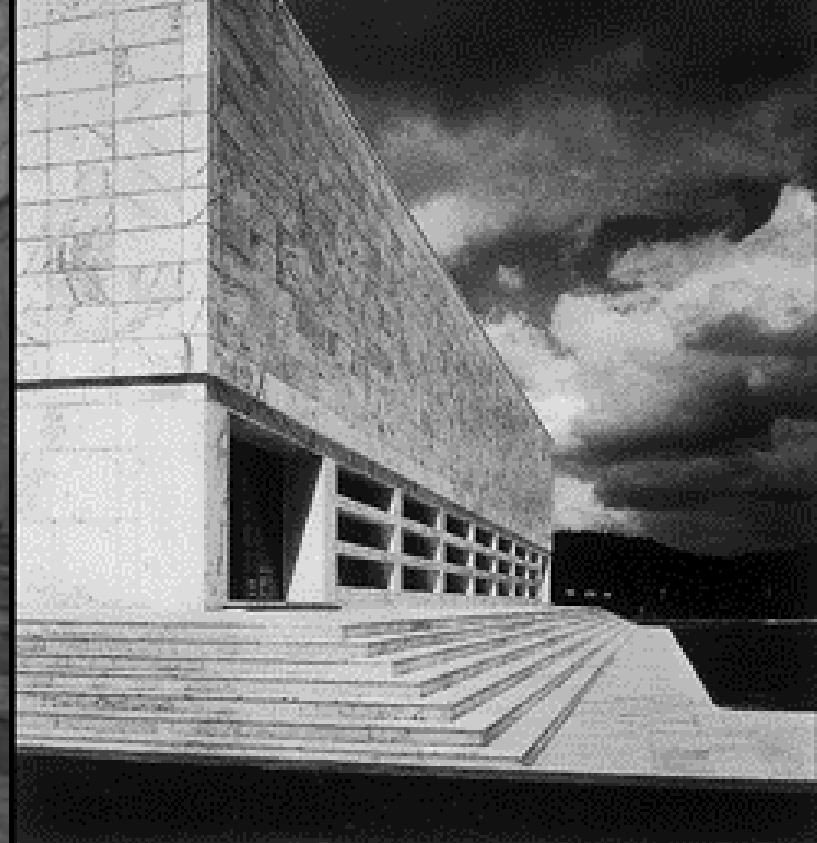


A. Foschini. Corso Rinascimento

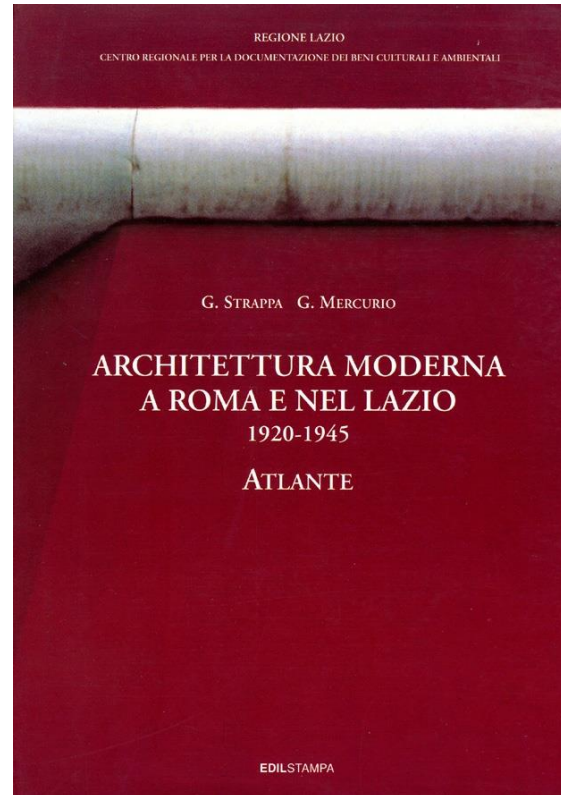










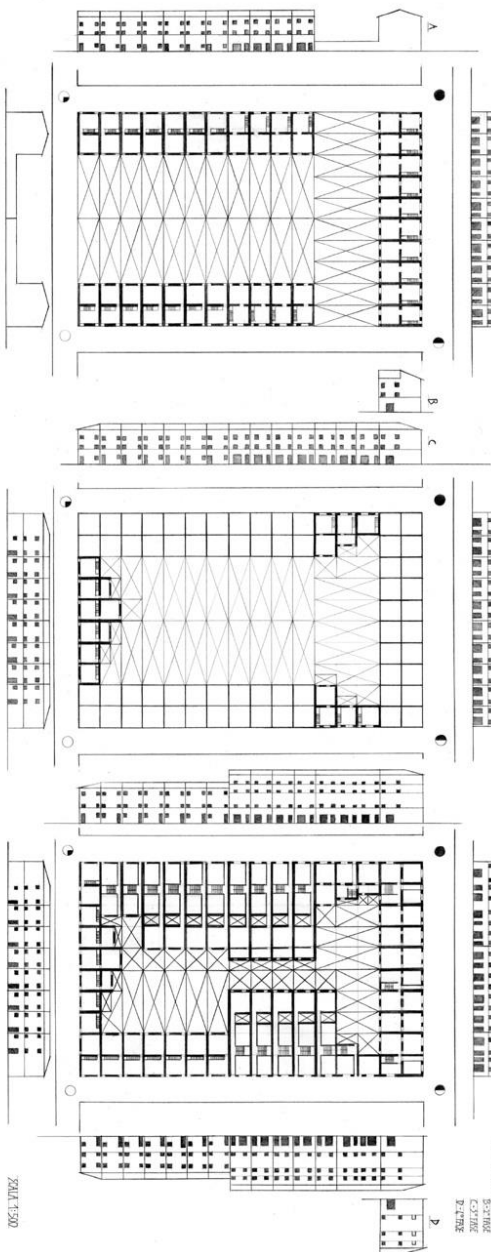


## References



practical work – row house fabric on matrix, building, connecting  
routes

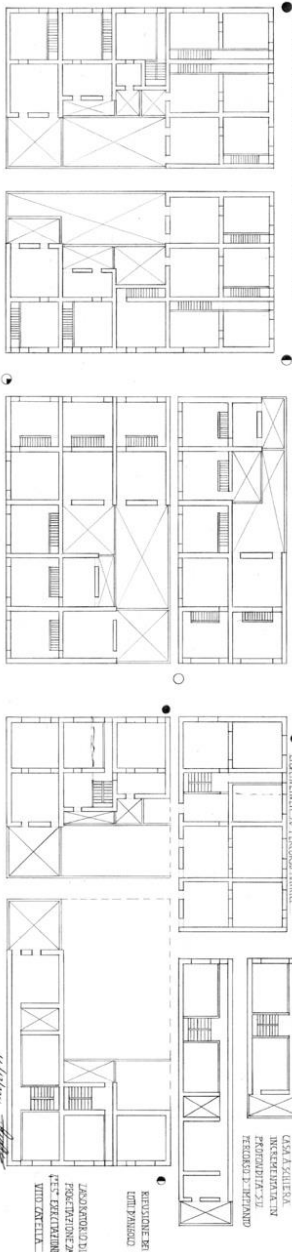




PIRE 1700

PIRE: SALVATA PER IL LOTTI PANICO

PIRE: LUNGA RILAZZAZIONE



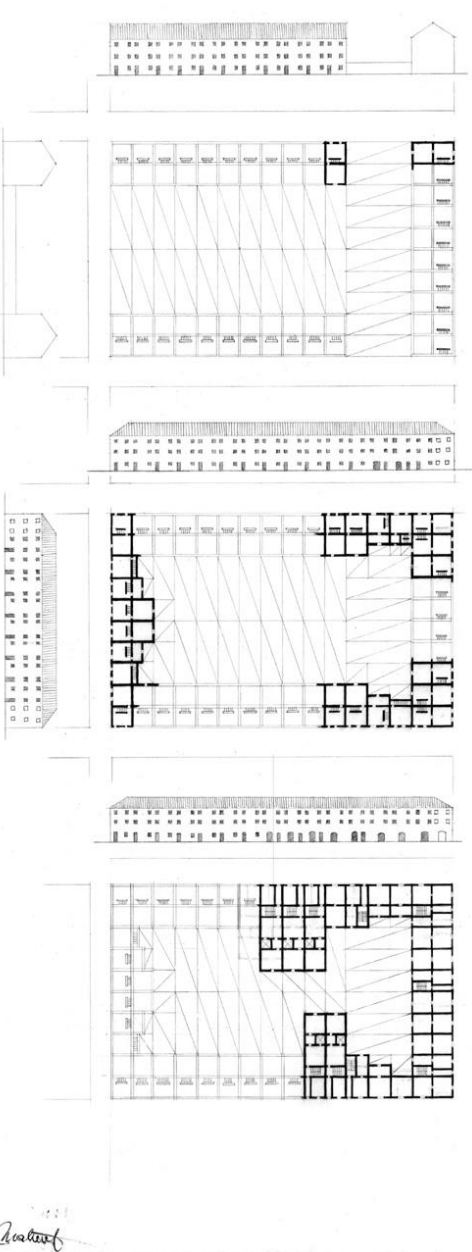
PIRE 1700

PIRE: LUNGA RILAZZAZIONE  
CONFEZIONE B-1700  
C-1700  
P-1700

PIRE: LUNGA RILAZZAZIONE  
CONFEZIONE B-1700  
C-1700  
P-1700



PIRE 1700



PIRE 1700

PIRE: LUNGA RILAZZAZIONE  
CONFEZIONE B-1700  
C-1700  
P-1700

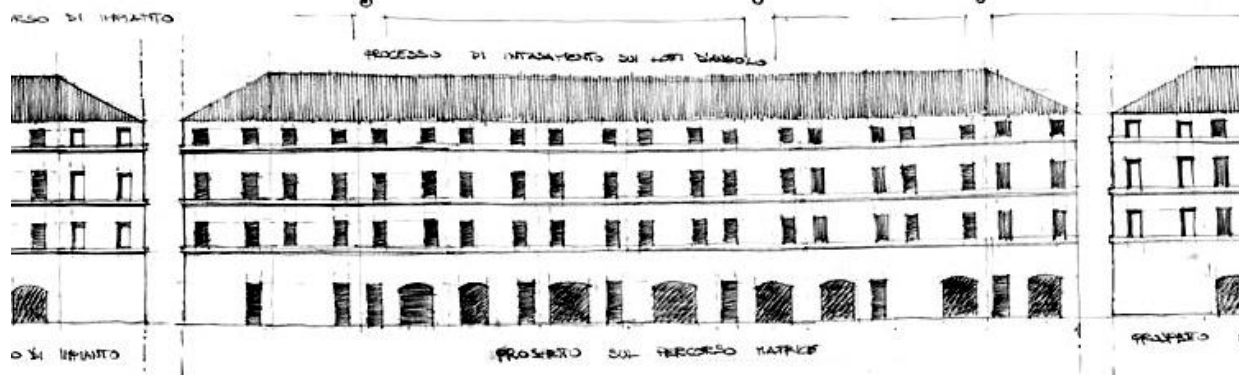
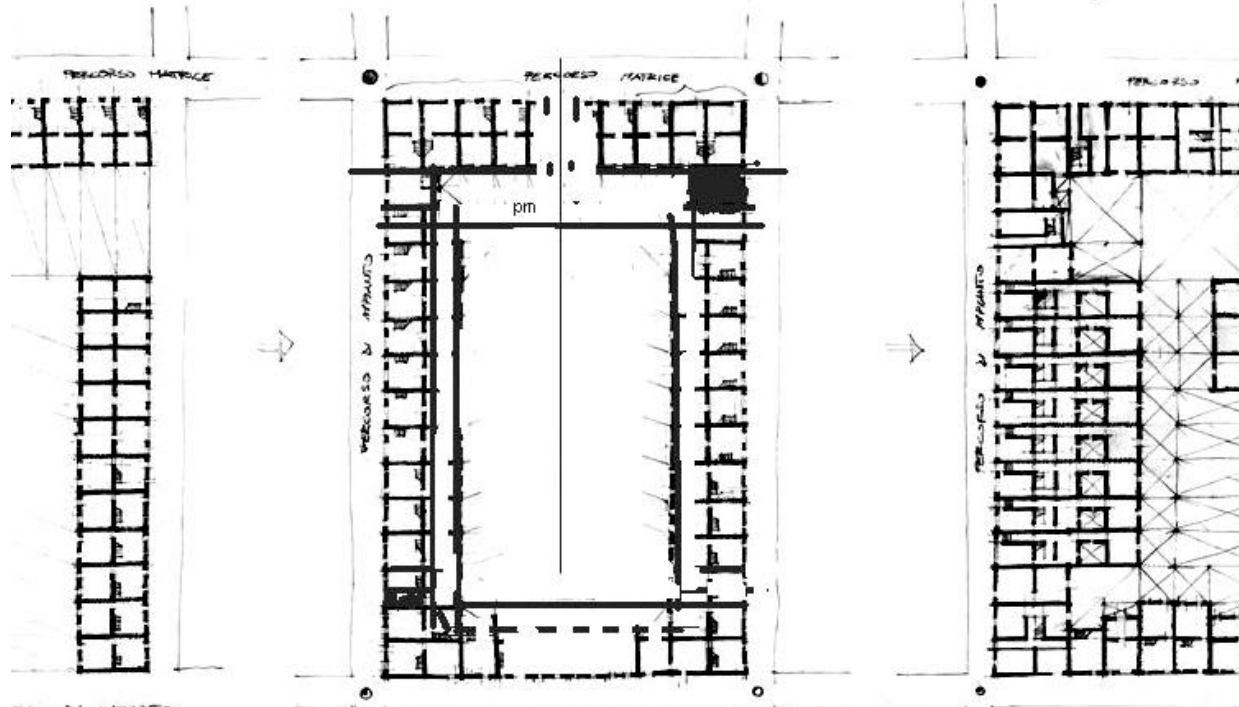
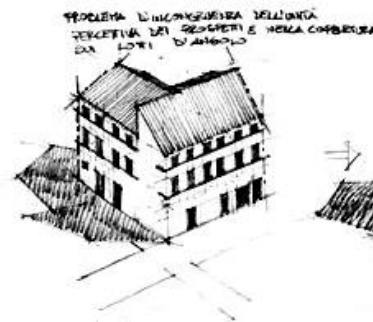
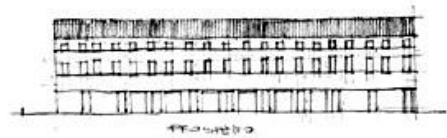
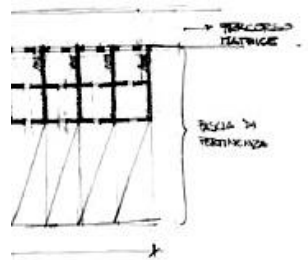
PIRE: LUNGA RILAZZAZIONE  
CONFEZIONE B-1700  
C-1700  
P-1700

PIRE: LUNGA RILAZZAZIONE  
CONFEZIONE B-1700  
C-1700  
P-1700

PIRE 1700

PIRE: LUNGA RILAZZAZIONE  
CONFEZIONE B-1700  
C-1700  
P-1700







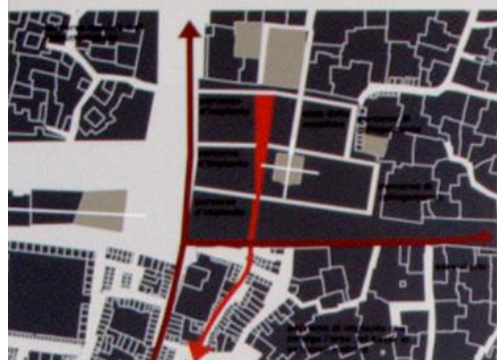


**AREA DI PROGETTO: nodo di penetrazione**

L'area di progetto si trova nel centro storico di una città medievale, dove il tessuto urbano è il prodotto di un'evoluzione continua. Il tessuto è una strada commerciale che si apre verso il mare e la porta ad est.

Sul lato verso il mare, si imposta un percorso di penetrazione per il traffico dei mezzi e dei pedoni.

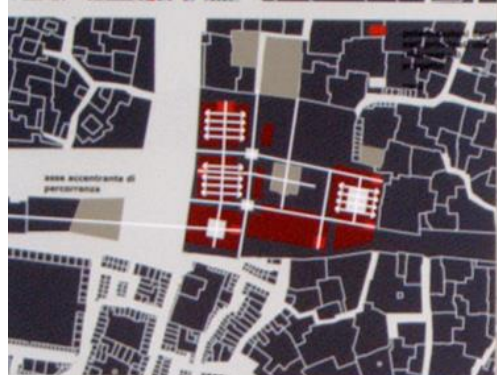
Le principali funzioni di cui la proposta si occupa sono: dare a tutta una rinnovata due edifici caratteristici del tessuto urbano, e dare un progetto di riqualificazione in cui i principi tecnologici vengono da una copertura seriale e spaziale dei due edifici, e dare un progetto di riqualificazione in cui i principi tecnologici vengono da una copertura seriale e spaziale dei due edifici.



**PROGETTO: struttura del percorso e dell'uso**

Il progetto si basa su un concetto di struttura del tessuto urbano, che si basa su un concetto di struttura del tessuto urbano, che si basa su un concetto di struttura del tessuto urbano.

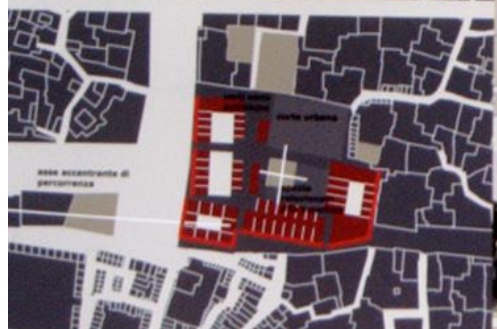
Il progetto si basa su un concetto di struttura del tessuto urbano, che si basa su un concetto di struttura del tessuto urbano, che si basa su un concetto di struttura del tessuto urbano.



#### PROGETTO: assi, linee e nodi

Alle scale dell'assetto urbano le cellule degli edifici si specializzano in relazione alla gerarchia dei percorsi, dei nodi. Gli assi principali di penetrazione degli edifici terminano in nodi di penetrazione, che si specializzano in relazione alla gerarchia dei percorsi, dei nodi.

Il nodo di penetrazione è un punto di incontro tra due assi principali di penetrazione, che si specializzano in relazione alla gerarchia dei percorsi, dei nodi.



#### REINTERPRETAZIONE DEL CONCETTO DI KULLIYE: recinto e nodalità

L'interpretazione aggiornata della kulliyeh, ha portato all'individuazione di un tessuto di edifici specialistici legati fra loro da rapporti di necessità reciproca.

Nelle kulliyeh è solitamente presente un edificio che svolge maggiormente funzioni di relazione con il quartiere e questo compito è assolto dall'edificio modale a tutt'oggi.

